

Rev	Date	By	Description
P1	21/11/22	KP	Preliminary Drawing Issue
P2	28/01/23	KP	Lobby door added to stair to basement. Drop off bay added adjacent main entrance.
P3	01/02/23	KP	Landscaping updates
P4	11/05/23	KP	Planning Issue: Various alterations to incorporate a 1.8m footpath to Love Walk as requested by Southwark Planning
P5	22/05/23	KP	1.8m wide footpath to Love Walk extended up and 10m as requested by Southwark Planning
P6	19/06/23	KP	External steps for alternative staff access into the building added adjacent to external colonnade. Cycle store added adjacent to rear garden.



Department Legend

- Bedroom
- Bin Store
- Circulation Area
- Circulation Areas
- Day Spaces
- Entrance
- Patient WC Areas
- Shared Staff Areas
- Storage

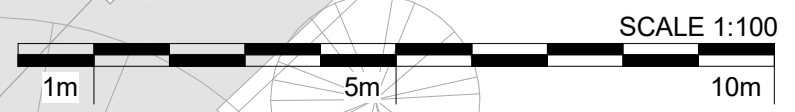
Level 00 Ground floor plan-Planning
1 : 100

SGP

Architects + Masterplanners
33 Park Place
Leeds
LS1 2RY
t: +44 (0)113 246 7969
www.stephengeorge.co.uk

Mission Care (62 Bed Scheme)
Proposed Care Home Development
10 Love Walk
London
SE5 8AE
Drawing Name:
Proposed Ground Floor Plan

Drawing Stage:	Planning
Status:	S3
SGP File Ref:	19236-SGP-B1-ZZ-M3-A-Building
19-236-21/11/22	KP Health 1:100 @ A1 P6
SGP Project No:	Date: Drawn: Team: Rev:
Drawn Number:	
Project Code:	19236-SGP-B1-00-DR-A- 131100
Originator Volume Level:	Type Role Number



Red Line Boundary based on OS Data and NOT confirmed as the Legal Boundary
This drawing, the works and concepts depicted are copyright of Stephen George + Partners LLP and may not be reproduced or made use of, either directly or indirectly without express written consent. All heights, levels, sizes and dimensions to be checked on site before any work is put to hand.
Information shown on this drawing that is produced by others has not been verified by Stephen George + Partners LLP and no liability is accepted for its accuracy.
This document is prepared for the sole use of the documented recipient and Stephen George + Partners LLP accepts no liability for use of this document by parties other than the party for whom it was prepared or for purposes other than those for which it was prepared.

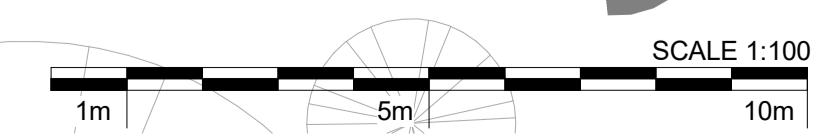
Rev	Date	By	Description
P1	21/11/22	KP	Preliminary Drawing Issue
P2	20/01/23	KP	Landscaping updated
P3	01/02/23	KP	Planning Issue
P4	11/05/23	KP	Various alterations to incorporate a 1.5m footpath to Love Walk as requested by Southwark Planning



- Department Legend**
- Bedroom
 - Circulation Area
 - Circulation Areas
 - Day Spaces
 - Landscape
 - Patient WC Areas
 - Shared Staff Areas
 - Storage

Level 01 First floor plan-Planning
1 : 100

Red Line Boundary based on OS Data and NOT confirmed as the Legal Boundary
 This drawing, the works and concepts depicted are copyright of Stephen George + Partners LLP and may not be reproduced or made use of, either directly or indirectly without express written consent. All heights, levels, sizes and dimensions to be checked on site before any work is put to hand.
 Information shown on this drawing that is produced by others has not been verified by Stephen George + Partners LLP and no liability is accepted for its accuracy.
 This document is prepared for the sole use of the documented recipient and Stephen George + Partners LLP accepts no liability for use of this document by parties other than the party for whom it was prepared or for purposes other than those for which it was prepared.



SGP
 Architects + Masterplanners
 33 Park Place
 Leeds
 LS1 2RY
 t: +44 (0)113 246 7969
 www.stephengeorge.co.uk

Mission Care (62 Bed Scheme)
 Proposed Care Home Development
 10 Love Walk
 London
 SE5 8AE
 Drawing Name:
 Proposed First Floor Plan

Drawing Stage:	Planning					
Status:	S3					
SGP File Ref:	19236-SGP-B1-ZZ-M3-A-Building					
19-236	21/11/22	KP	Health	1 : 100	@ A1	P4
SGP Project No:	Date:	Drawn:	Team:	Scale:	Rev:	
Drawn Number:						
Project Code:	Originator	Volume	Level	Type	Role	Number
19236-SGP-B1-01-DR-A-						131101

W.C. IN PROGRESS SCHEME

Rev	Date	By	Description
P1	21/11/22	KP	Preliminary Drawing Issue
P2	20/10/23	KP	Landscaping updated
P3	01/02/23	KP	Planning Issue
P4	11/05/23	KP	Various alterations to incorporate a 1.5m footpath to Love Walk as requested by Southwark Planning



Department Legend

Bedroom	Bedroom
Circulation Area	Circulation Area
Circulation Areas	Circulation Areas
Day Spaces	Day Spaces
Patient WC Areas	Patient WC Areas
Shared Staff Areas	Shared Staff Areas
Storage	Storage

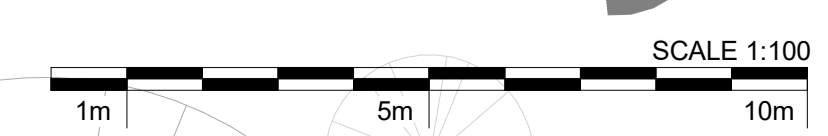
Level 02 Second floor plan-Planning
1 : 100

SGP
Architects + Masterplanners

33 Park Place
Leeds
LS1 2RY
t: +44 (0)113 246 7969
www.stephengeorge.co.uk

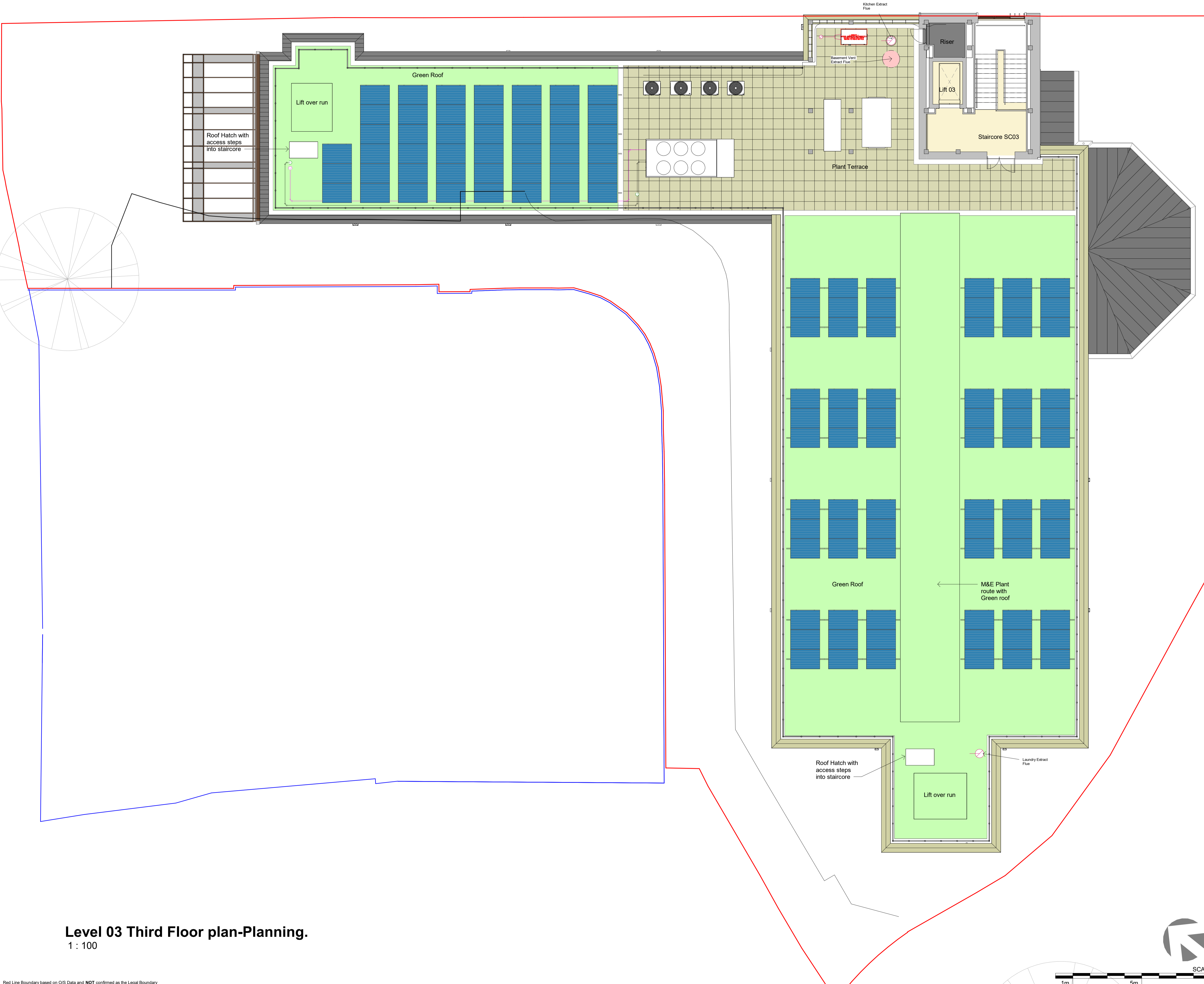
Mission Care (62 Bed Scheme)
Proposed Care Home Development
10 Love Walk
London
SE5 8AE
Drawing Name:
Proposed Second Floor Plan

Drawing Stage:	Planning					
Status:	S3					
SGP File Ref:	19236-SGP-B1-ZZ-M3-A-Building					
19-236	21/11/22	KP	Health	1 : 100	@ A1	P4
SGP Project No:	Date:	Drawn:	Team:	Scale:	Rev:	
Drawn Number:						
Project Code:	Originator	Volume	Level	Type	Role	Number
19236-SGP-B1-02-DR-A-						131102



Red Line Boundary based on OS Data and NOT confirmed as the Legal Boundary
This drawing, the works and concepts depicted are copyright of Stephen George + Partners LLP and may not be reproduced or made use of, either directly or indirectly without express written consent. All heights, levels, sizes and dimensions to be checked on site before any work is put to hand.
Information shown on this drawing that is produced by others has not been verified by Stephen George + Partners LLP and no liability is accepted for its accuracy.
This document is prepared for the sole use of the documented recipient and Stephen George + Partners LLP accepts no liability for use of this document by parties other than those for whom it was prepared or for purposes other than those for which it was prepared.

Rev	Date	By	Description
P1	21/11/22	KP	Preliminary Drawing Issue
P2	20/01/23	KP	Landscaping updated
P3	04/09/23	KP	Planning Issue
P4	11/05/23	KP	Various alterations to incorporate a 1.5m footpath to Love Walk as requested by Southwark Planning



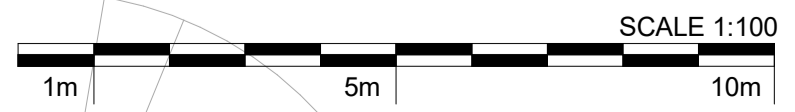
Level 03 Third Floor plan-Planning.
1 : 100

SGP

Architects + Masterplanners
33 Park Place
Leeds
LS1 2RY
t: +44 (0)113 246 7969
www.stephengeorge.co.uk

Mission Care (62 Bed Scheme)
Proposed Care Home Development
10 Love Walk
London
SE5 8AE
Drawing Name:
Proposed Third Floor Plan

Drawing Stage:	Planning					
Status:	S3					
SGP File Ref:	19236-SGP-B1-ZZ-M3-A-Building					
19-236	21/11/22	KP	Health	1 : 100	@ A1	P4
SGP Project No:	Date:	Drawn:	Team:	Scale:	Rev:	
Drawn Number:						
19236-SGP-B1-03-DR-A-	131103					
Project Code:	Originator	Volume	Level	Type	Role	Number



Red Line Boundary based on OS Data and NOT confirmed as the Legal Boundary
This drawing, the works and concepts depicted are copyright of Stephen George + Partners LLP and may not be reproduced or made use of, either directly or indirectly without express written consent. All heights, levels, sizes and dimensions to be checked on site before any work is put to hand.
Information shown on this drawing that is produced by others has not been verified by Stephen George + Partners LLP and no liability is accepted for its accuracy.
This document is prepared for the sole use of the documented recipient and Stephen George + Partners LLP accepts no liability for use of this document by parties other than the party for whom it was prepared or for purposes other than those for which it was prepared.

WORK IN PROGRESS SCHEME

Rev	Date	By	Description
P1	21/11/22	KP	Preliminary Drawing Issue
P2	20/10/23	KP	Lobby door added to stair to basement. Drop off bay added adjacent main entrance. Landscaping updated.
P3	01/02/23	KP	Planning Issue
P4	11/05/23	KP	Vertical alterations to incorporate a 1.8m width to Love Walk as requested by Southwark Planning
P5	22/05/23	KP	External steps to Love Walk extended up to 10m as requested by Southwark Planning
P6	19/06/23	KP	External steps for alternative staff access into the building added adjacent to external carpark. Cycle store added adjacent to rear garden.



Level 04 Roof floor plan-Planning
1 : 100

SGP
Architects + Masterplanners
33 Park Place
Leeds
LS1 2RY
t: +44 (0)113 246 7969
www.stephengeorge.co.uk

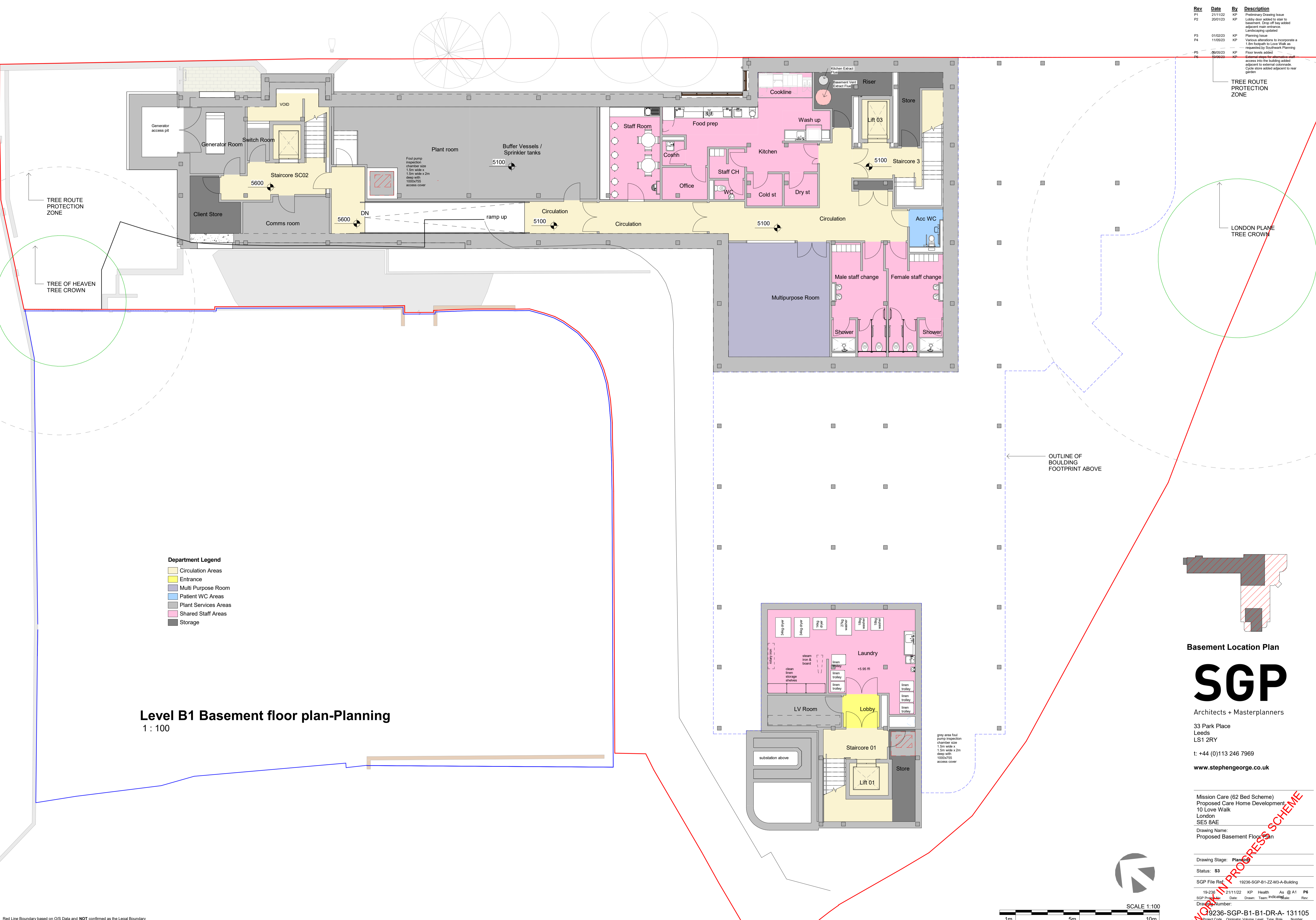
Mission Care (62 Bed Scheme)
Proposed Care Home Development
10 Love Walk
London
SE5 8AE
Drawing Name:
Proposed Roof Plan

Drawing Stage:	Planning					
Status:	S3					
SGP File Ref:	19236-SGP-B1-ZZ-M3-A-Building					
19-236	21/11/22	KP	Health	1 : 100	@ A1	P6
SGP Project No:	Date:	Drawn:	Team:	Scale:	Rev:	
Drawn Number:						
Project Code:	Originator	Volume	Level	Type	Role	Number
19236-SGP-B1-04-DR-A-						131104

Red Line Boundary based on OS Data and NOT confirmed as the Legal Boundary
This drawing, the works and concepts depicted are copyright of Stephen George + Partners LLP and may not be reproduced or made use of, either directly or indirectly without express written consent. All heights, levels, sizes and dimensions to be checked on site before any work is put to hand. Information shown on this drawing that is produced by others has not been verified by Stephen George + Partners LLP and no liability is accepted for its accuracy. This document is prepared for the sole use of the documented recipient and Stephen George + Partners LLP accepts no liability for use of this document by parties other than those for whom it was prepared or for purposes other than those for which it was prepared.

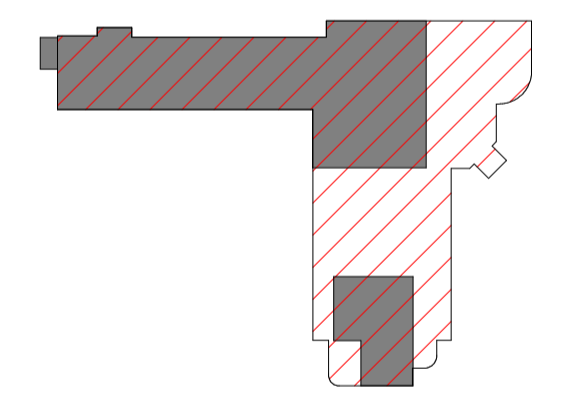
WORK IN PROGRESS SCHEME

Rev	Date	By	Description
P1	21/11/22	KP	Preliminary Drawing Issue
P2	20/01/23	KP	Lobby door added to stair to basement. Drop off bay added adjacent main entrance. Landscaping updated.
P3	01/02/23	KP	Planning Issue
P4	11/05/23	KP	Various alterations to incorporate a 1.5m footpath to Love Walk as requested by Southwark Planning
P5	20/05/23	KP	Floor levels added
P6	19/06/23	KP	External steps for alternative access into the building added adjacent to external colonnade. Cycle store added adjacent to rear garden



- Department Legend**
- Circulation Areas
 - Entrance
 - Multi Purpose Room
 - Patient WC Areas
 - Plant Services Areas
 - Shared Staff Areas
 - Storage

Level B1 Basement floor plan-Planning
1 : 100



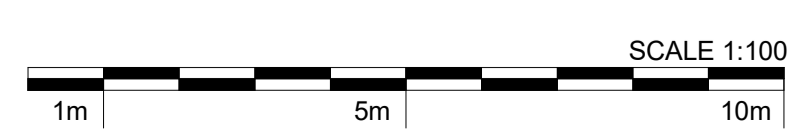
Basement Location Plan

SGP
Architects + Masterplanners

33 Park Place
Leeds
LS1 2RY
t: +44 (0)113 246 7969
www.stephengeorge.co.uk

Mission Care (62 Bed Scheme)
Proposed Care Home Development
10 Love Walk
London
SE5 8AE
Drawing Name:
Proposed Basement Floor Plan

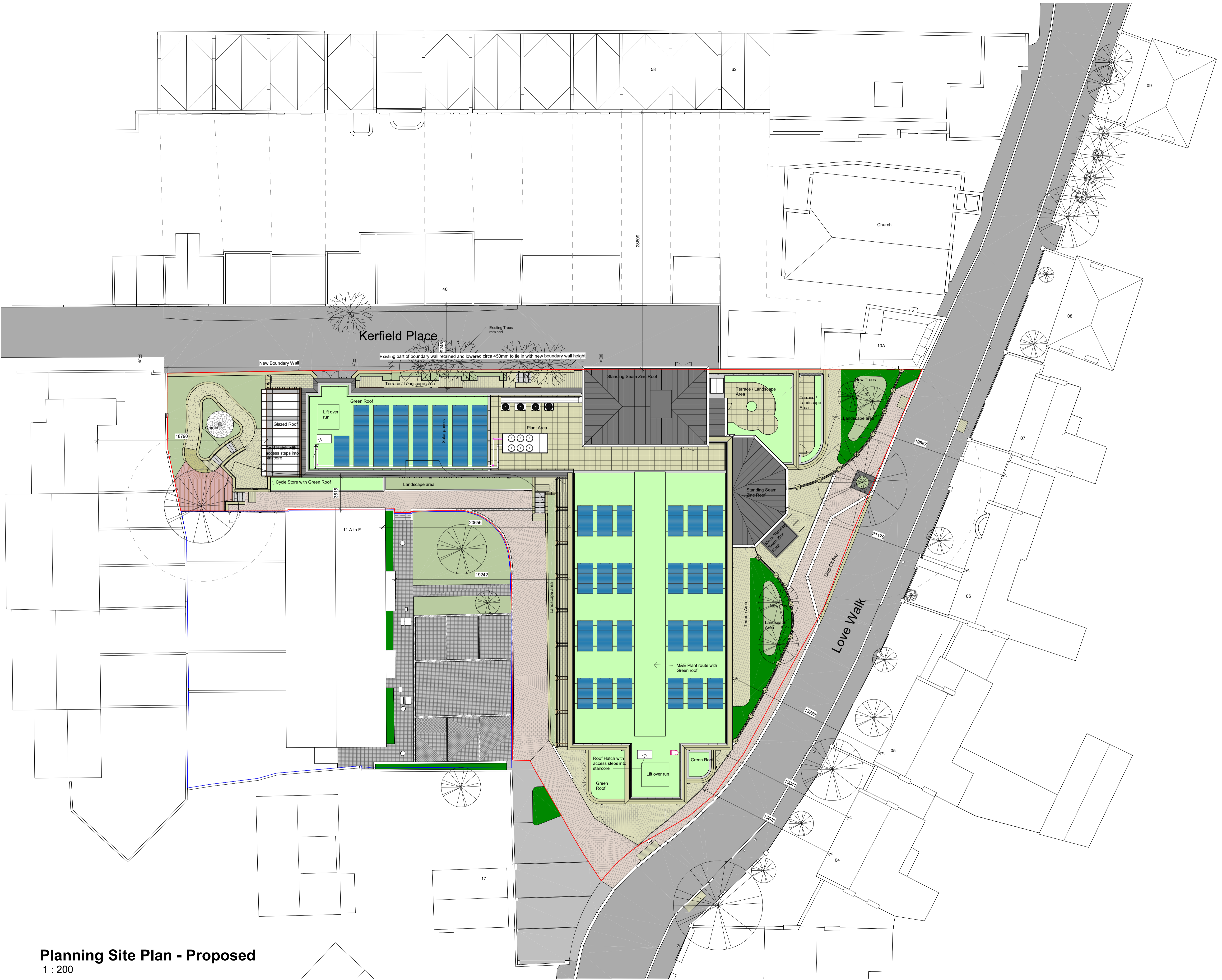
Drawing Stage:	Planning					
Status:	S3					
SGP File Ref:	19236-SGP-B1-ZZ-M3-A-Building					
19-236	21/11/22	KP	Health	As	@ A1	P6
SGP Project No:	Date:	Drawn:	Team:	Indicated:	Date:	Rev:
Drawing Number:						
19236-SGP-B1-B1-DR-A- 131105						
Project Code:	Originator	Volume	Level	Type	Role	Number



Red Line Boundary based on OS Data and NOT confirmed as the Legal Boundary
This drawing, the works and concepts depicted are copyright of Stephen George + Partners LLP and may not be reproduced or made use of, either directly or indirectly without express written consent. All heights, levels, sizes and dimensions to be checked on site before any work is put to hand. Information shown on this drawing that is produced by others has not been verified by Stephen George + Partners LLP and no liability is accepted for its accuracy. This document is prepared for the sole use of the documented recipient and Stephen George + Partners LLP accepts no liability for use of this document by parties other than the party for whom it was prepared or for purposes other than those for which it was prepared.

WORK IN PROGRESS SCHEME

Rev	Date	By	Description
P1	22/11/22	JCC	Preliminary Drawing Issue
P2	23/01/23	KP	Drop off bay added near main entrance and landscaping updated
P3	01/02/23	KP	Planning Issue
P4	11/05/23	KP	Various alterations to incorporate a 1.8m wide footpath to Love Walk as requested by Southwark Planning
P5	22/05/23	KP	1.8m wide footpath to Love Walk extended onto plot 10a as requested by Southwark Planning
P6	19/06/23	KP	External steps for alternative staff access into the building added adjacent to external colonnade. Cycle store added adjacent to rear garden
P7	25/08/23	JCC	Preliminary Issue
P8	04/10/23	BR	Drawing Issue - IES Tap Upload

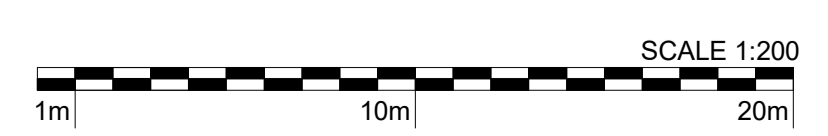


Planning Site Plan - Proposed
1 : 200

SGP
Architects + Masterplanners
33 Park Place
Leeds
LS1 2RY
t: +44 (0)113 246 7969
www.stephengeorge.co.uk

Mission Care (62 Bed Scheme)
Proposed Care Home Development
10 Love Walk
London
SE5 8AE
Drawing Name:
Proposed Site Plan

BREEAM Credit:	LE01					
Drawing Stage:	Planning					
Status:	S3					
SGP File Ref:	19236-SGP-B1-ZZ-M3-A-Building					
19-236	08/11/22	RH	Health	1 : 200	@ A1	P8
SGP Project No:	Date:	Drawn:	Team:	Scale:	Rev:	
Drawn Number:						
Project Code:	Originator	Volume	Level	Type	Role	Number
19236-SGP-B1-ZZ-DR-A-						131001



Red Line Boundary based on O/S Data and NOT confirmed as the Legal Boundary
This drawing, the works and concepts depicted are copyright of Stephen George + Partners LLP and may not be reproduced or made use of, either directly or indirectly without express written consent. All heights, levels, sizes and dimensions to be checked on site before any work is put to hand. Information shown on this drawing that is produced by others has not been verified by Stephen George + Partners LLP and no liability is accepted for its accuracy. This document is prepared for the sole use of the documented recipient and Stephen George + Partners LLP accepts no liability for use of this document by parties other than those for whom it was prepared or for purposes other than those for which it was prepared.

WORK IN PROGRESS SCHEME